



PLS

**(Push Lock System)
HOSES & FITTINGS**



PLS HOSES



PLS



PLS HOT



PLS PU

BRASS FITTINGS



Male barb
connector BSPP
thread



Swivel female barb
connector for
universal fittings



Brass straight
adapter BSPT
& metric thread



Brass elbow
adapter BSPT
& metric thread



Male barb
connector BSPT



Male barb
connector NPT



Unions barb
connector

STEEL FITTINGS



Straight swivel
female ogival seat
60°C BSPP thread



Swivel elbow 45°,
female ogival seat
60° BSPP thread



Swivel elbow 90°,
female ogival seat
60° BSPP thread



Straight adapter
BSPT/BSPP thread
with ogival seat 60°C

STAINLESS STEEL AISI 316L FITTINGS



Male barb
connector BSPT



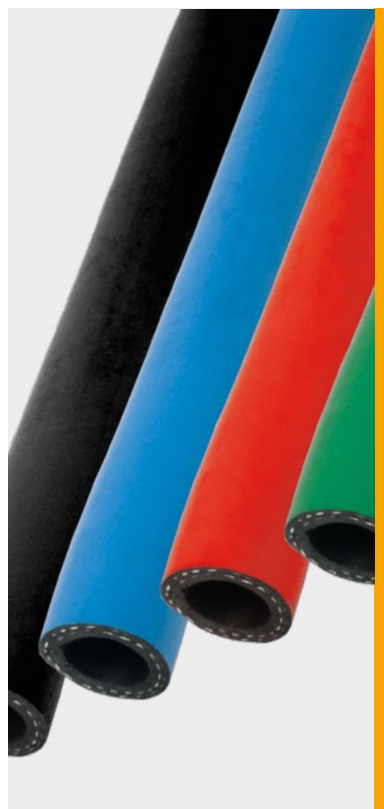
Male barb
connector NPT



Unions barb
connector



Tube barb
connector



-40°C ÷ +75°C air
0°C ÷ +100°C water
-40°C ÷ +100°C environment
temperature



Max. working pressure:
16 Bar
Min. bursting pressure:
64 Bar



Compressed air & industrial
water



Inner layer:
synthetic rubber
Reinforcement:
high tensile textile layer
Outer layer:
high performance synthetic rubber

FEATURES

- High flexibility
- High abrasion resistance
- 100% silicon free
- Ozone resistance
- For use without hose clamp
- For individual applications, especially for the automobile industry for media air and water

SILICONE FREE



Products in compliance with
the directive 1907/2006





RoHS3

Products in compliance with
the directive EU 2015/863

PLS


DN	ID (mm)	OD (mm)	MIN. BENDING RADIUS (mm)	MAX. WORKING PRESSURE 20°C (Bar)	MIN. BURSTING PRESSURE (Bar)	WEIGHT (g/m)	Q.TY FOR ROLL (m)
1/4"	6	6,5 ^{+0,4} _{-0,3}	12,0 - 13,0	16	64	140	40
3/8"	10	9,7 ±0,4	14,8 - 16,0	16	64	170	40
1/2"	13	13,0 ±0,5	18,5 - 20,0	16	64	260	40
5/8"	16	16,0 ^{+0,7} _{-0,3}	23,4 - 25,0	16	64	340	40
3/4"	20	19,3 ±0,5	26,0 - 28,0	16	64	420	40
1"	25	25,6 ±0,5	34,0 - 36,0	16	64	640	40

Black color: standard - Blue, Red and Green: available on demand

Colors	 Black	 Blue	 Red	 Green
--------	--	---	---	--

Restrictions: not permitted for use in air brake systems and high dynamic pulsation systems. Not recommended for fuels and hydraulic and lubricating oils.
Use of hose only in conjunction with our in-house hose nipples or those that have been tested from our customers or tested and released by our company.
The use of customer-specific fittings is in the users responsibility.

All informations mentioned in this document are based on tests with greatest care and based on room temperature of +20°C. However, the matching of these values obtained in practice cannot be guaranteed because experience has shown, that with different application areas the influence of unknown factors which affect the properties and lifetime has to be considered.



-40 °C ÷ +75 °C air
0 °C ÷ +120 °C water
-40 °C ÷ +120 °C environment
temperature



Max. working pressure:
14 Bar
Min. bursting pressure:
56 Bar



Compressed air & industrial
water



Inner layer:
synthetic rubber
Reinforcement:
high tensile textile layer
Outer layer:
high performance synthetic rubber

FEATURES

- High flexibility
- High abrasion resistance
- 100% silicon free
- For use without hose clamp
- For use in the injection moulding sector and automobile-industry for the transport of media demineralized water up to 120°C with corrosion inhibitor and media air up to 75°C.

SILICONE FREE



Products in compliance with
the directive 1907/2006

RoHS3

Products in compliance with
the directive EU 2015/863

PLS HOT


DN		ID (mm)	OD (mm)	MIN. BENDING RADIUS (mm)	MAX. WORKING PRESSURE 20 °C (Bar)	MIN. BURSTING PRESSURE (Bar)	WEIGHT (g/m)	Q.TY FOR ROLL (m)
1/4"	6	6,5 ^{+0,4} _{-0,3}	12,0 - 13,0	45	14	56	125	40
3/8"	10	9,7 ±0,4	14,8 - 16,0	75	14	56	150	40
1/2"	13	13,0 ±0,5	18,5 - 20,0	90	14	56	235	40
5/8"	16	16,0 ^{+0,7} _{-0,3}	23,4 - 25,0	115	14	56	350	40

Colors	 Blue	 Red
--------	---	--

Restrictions: not permitted for use in air brake systems and high dynamic pulsation systems. Not recommended for fuels and hydraulic and lubricating oils.

Use of hose only in conjunction with our in-house hose nipples or those that have been tested from our customers or tested and released by our company.

The use of customer-specific fittings is in the users responsibility.

All informations mentioned in this document are based on tests with greatest care and based on room temperature of +20°C. However, the matching of these values obtained in practice cannot be guaranteed because experience has shown, that with different application areas the influence of unknown factors which affect the properties and lifetime has to be considered.



-20°C ÷ +80°C air & fluids



Working pressure:

See the table

Bursting pressure:

See the table



Air and fluids suitable with construction materials



Polyurethane (PU) hose with polyester yarn reinforcement for industrial robotics

HARDNESS

SHORE A 85

FEATURES

- Flexibility
- High abrasion resistance
- Silicon free
- Ozone resistance
- Smooth surfaces
- Excellent crush resistance
- Suitable for contact with food, according to FDA 21 cfr 177.2600 "e" (Rubber articles intended for repeated use in contact with aqueous food)



SILICONE FREE



Products in compliance with the directive 1907/2006







Products in compliance with the directive EU 2015/863

PLS PU

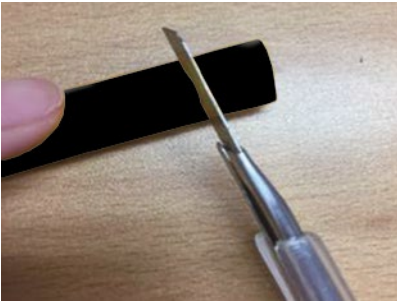


DN		ID (mm)	OD (mm)	BENDING RADIUS (mm)	WORKING PRESSURE 23°C (Bar)	WORKING PRESSURE 40°C (Bar)	WORKING PRESSURE 60°C (Bar)	BURST PRESSURE 23°C (Bar)	WEIGHT (g/m)	Q.TY ROLL (mt)
1/4"	6	6,3	12,5	25	16	12	8	64	125	100
3/8"	10	9,5	16	50	16	12	8	64	160	100
1/2"	13	12,7	19	75	14	10	7	56	200	100
5/8"	16	15,8	23	120	14	10	7	56	250	50
3/4"	19	19	27	150	14	10	7	56	340	50

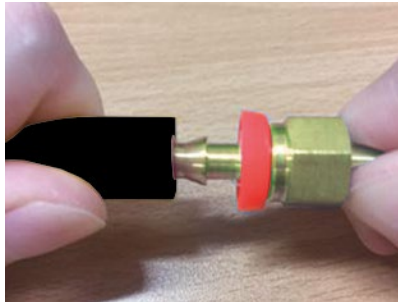
Colors				
	Black	Light Blue	Red	Green

ASSEMBLY INSTRUCTIONS

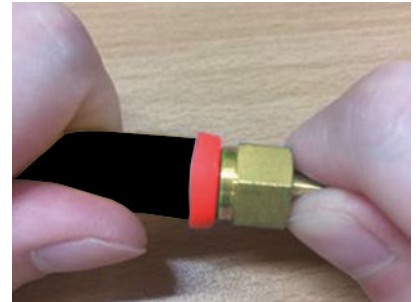
HOW TO ASSEMBLY



1. Trim the hose end for leave flat and clean hose end.



2. Insert fitting first barb into hose. (use light oil or soapy water lubricate help to ease assembly)



3. Grip the hose or fitting and push on hose until hose seats into finishing cap.
4. Completed Assembly, ensure that the hose is completely inserted.

HOW TO DISASSEMBLY



1. Cut hose lengthwise from finishing cap to end of barb.



2. Bend hose to expose barbs, then remove hose quickly pulling.